



# Perceptions of Nursing Education: Empowering Change Agents

Jasline Moreno MSN,RN,CHSE,CNE

Crystel L. Farina, PhD, RN, CNE, CHSE

Tonya Schneidereith, PhD, MBA, CRNP, PPCNP-BC, CPNP-AC, CNE, CHSE-A, ANEF, FSSH, FAAN

# Disclosures

Jasline Moreno does not have any any real or perceived vested interest that relate to this presentation.

Tonya Schneidereith is Chief Executive Officer of the simulation consulting company, SIMPL Simulation, LLC, Baltimore, MD

Crystel L. Farina Chief Financial Officer of the simulation consulting company, SIMPL Simulation, LLC, Baltimore, MD



## Facilitators

---



**Jasline Moreno**



**Crystel Farina**



**Tonya Schneidereith**





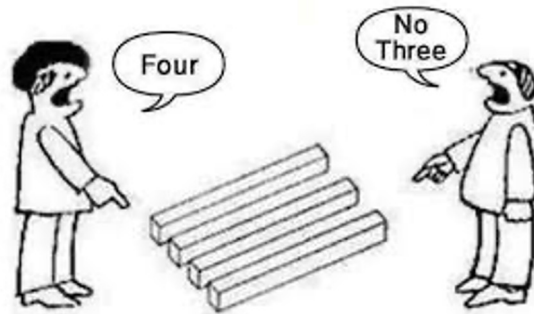
Welcome



## Agenda

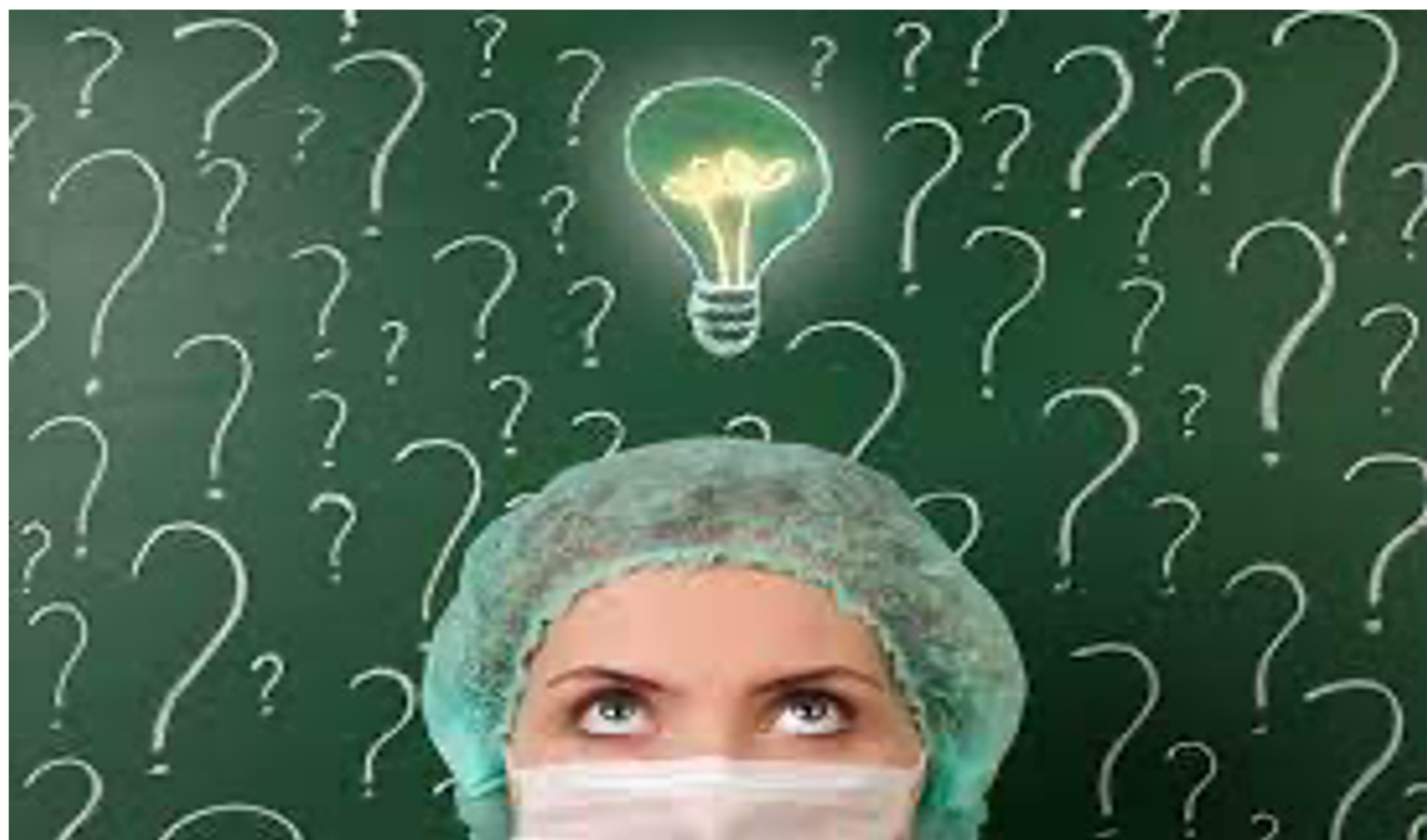


It is really confusing!!!













## Three Groups



**Group 1 : Clinical Partners, Administrators, and Academic Leaders**



**Group 2: Academic Faculty**



**Group 3: Simulation Faculty**

# Roles within Groups

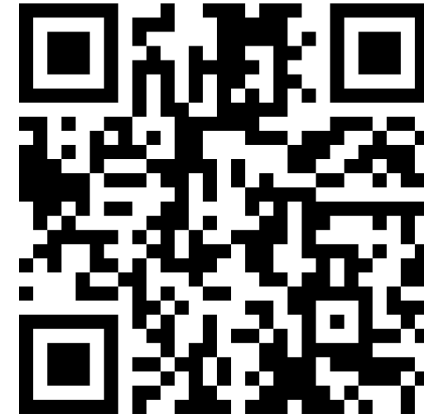
engage







Use this link to record  
themes/concepts that are emerging  
from the discussions





**CALL TO  
ACTION**





# Steps to become a change agent



IDENTIFY WHO THE  
“RIGHT PEOPLE” ARE



TALK TO THE “RIGHT  
PEOPLE”



GET INVOLVED

New INACSL Special Interest  
Group (SIG)



## Participation in a Qualitative Research Study





## Contact information



[Jasline.moreno@montgomerycollege.edu](mailto:Jasline.moreno@montgomerycollege.edu)



[cfarina@gwu.edu](mailto:cfarina@gwu.edu)



[tonya@simplsimulation.com](mailto:tonya@simplsimulation.com)