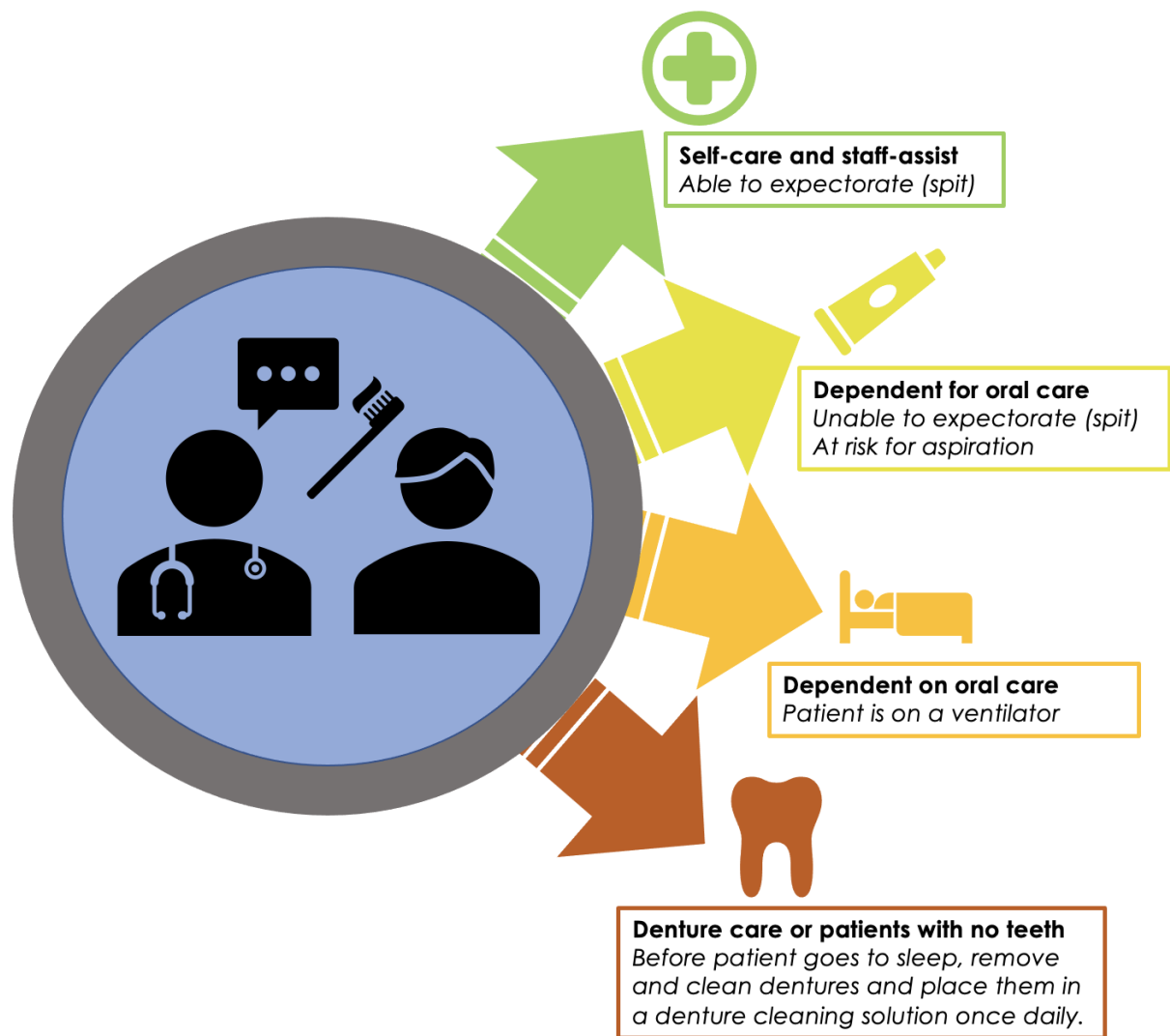


Preventing Non-Ventilator Associated Hospital Acquired Pneumonia NV-HAP with Oral Care Figures

Oral Care Protocol for Acute Care Hospitals

- Complete oral care assessment includes a swallow assessment first. Determine if a bite block is required and if additional swallow assessment is required.
- Always use Personal Protective Equipment (PPE) when assisting patients with mouth care and wash your hands before and after the procedure per policy.
- Document oral care in the patient record.
- Disposable oral swabs *do not* replace tooth brushing. They are for comfort care, one-time use only; do not leave oral swabs soaking in a cup for use later.
- Maintain adequate oral hydration when possible to maximize salivary flow.

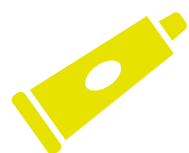


Copyright 2022. HealthCom Media. Adapted with permission. All rights reserved.
MyAmericanNurse.com

Sources:

Munro S, Baker D. Integrating oral health care into patient management to prevent hospital-acquired pneumonia: a team approach. Journal of the Michigan Dental Association July 2019: pg. 52-53.
<https://www.michigandental.org/Portals/pro/Journals/July%202019/html5/index.html?page=1&noflash>

Quinn, B, Baker, D. Comprehensive oral care helps prevent hospital acquired nonventilator pneumonia. American Nurse Today 2015: 10(3), 18-23.
<https://www.americannursetoday.com/wp-content/uploads/2015/03/ant3-CE-Oral-Care-225.pdf>



| Equipment | Procedure | Frequency |
|---|---|--|
| <ul style="list-style-type: none"> ✓ Soft toothbrush and toothpaste, ADA approved ✓ Mouth moisturizer prn/mouthwash ✓ Optional: Dental floss/interdental cleanser; Lip balm | <ol style="list-style-type: none"> 1. Set patient up at sink or in bed with all equipment 2. Instruct patient to brush teeth for 1-2 mins. 3. If patient is able and supply is available, use floss/interdental cleanser 4. May moisturize interior of mouth and lips using an oral swab prn 5. Discard disposable equipment in appropriate receptacle | <ul style="list-style-type: none"> • After each meal and before bed time • If patient is NPO, oral care should be done 2-4 times daily |
| <ul style="list-style-type: none"> ✓ Suction toothbrush with oral cleaning solution packet (as appropriate and available) ✓ Soft toothbrush moistened with clean tap water or alcohol-free mouthwash ✓ Mouth moisturizer prn ✓ Optional: Lip balm | <ol style="list-style-type: none"> 1. Moisten suction or regular toothbrush as noted 2. Assist the patient to brush all surfaces of the teeth until clean (1-2 mins) 3. Suction debris from mouth 4. Apply mouth moisturizer using an oral swab to the interior of the oral cavity and apply lip balm. 5. Discard disposable equipment in appropriate receptacle | <ul style="list-style-type: none"> • After each meal and before bed time • If patient is NPO, oral care should be done 2-4 times daily |



| | | |
|--|--|---|
| <ul style="list-style-type: none"> ✓ Suction toothbrush/oral swab ✓ Oral cleansing solution ✓ Mouth moisturizer ✓ Optional: Chlorhexidine oral rinse per hospital policy | <ol style="list-style-type: none"> 1. Provide suction PRN to remove oropharyngeal secretions that can migrate down the tube and settle on top of the cuff 2. Obtain suction toothbrush/oral swab and moisten with oral cleansing solution 3. Connect suction toothbrush to continuous suction 4. If chlorhexidine is used, remove the debris and cleanse the gums, tongue and inside of cheeks with the solution-saturated oral swab 5. Suction debris from mouth 6. Apply moisturizer using oral swab to the interior of the oral cavity and lips 7. Discard disposable equipment in appropriate receptacle | <ul style="list-style-type: none"> • Every 4 hours and PRN |
| <ul style="list-style-type: none"> ✓ Denture cup, labeled ✓ Denture brush is preferred when available, otherwise soft toothbrush ✓ Denture cleanser, ADA approved (for soaking) ✓ 2 oral swabs ✓ Optional: Denture adhesive; Mouth moisturizer PRN or mouthwash | <ol style="list-style-type: none"> 1. After removing dentures, place in a labeled denture cup 2. Brush the palate, buccal surfaces, gums and tongue with the toothbrush/swab 3. Patient can swish and spit mouthwash, or use oral swab to apply moisturizer 4. Line the sink with paper towel and add water to cushion the dentures in case you drop them. Carefully brush dentures with warm tap water. Do not use toothpaste as this may scratch the surface of the dentures. 5. Clean and dry equipment and return to patient's bedside table 6. Assist patient in inserting dentures into mouth 7. After HS mouthcare, soak dentures in a denture cleanser in the denture cup 8. If patient needs denture adhesive to hold firmly in place, follow manufacturer directions | <ul style="list-style-type: none"> • Oral care is provided after meals and at bedtime • Dentures should be removed and cleaned before the patient goes to sleep |

